



## **Careers Bulletin May 2025**

Welcome to the half termly Blatchington Mill Careers Bulletin. The aim of the publication is to keep you informed about what is happening at Blatch, as well as opportunities that are available for both parents/carers and students.

If you have any queries, ideas or need general information in regard to futures and/or careers, please contact us using the email address here:

[careers@blatchingtonmill.org.uk](mailto:careers@blatchingtonmill.org.uk)

### **Opportunities available**



### **East Sussex College Taster Days**

If you are interested in attending East Sussex College taster days you will need to sign up on their website and follow the links to choose which sessions you would like to attend.

## Year 10 taster day at DV8



# YEAR 10 TASTER EVENT

We would like to invite you to our upcoming 'Year 10 Taster Day' at both our campuses.

Attending this event will give you a taste of what it is like to study on our courses in Games, Media and Music.

 Wednesday 9th July 2025

 16:00 – 19:00

 Brighton: Dv8 Sussex, Victoria House, 125 Queens Road, BN1 3WB

 Bexhill: Dv8 Sussex, Bexhill Hive, 41 St Leonards Rd, TN40 1HS

**RSVP: [DV8ADMISSIONS@LONDONLC.ORG.UK](mailto:DV8ADMISSIONS@LONDONLC.ORG.UK)**

## **BACA College Year 10 Taster Day**

If you are currently in Year10, BACA would like to invite you to their College Taster Day on **Friday 11 July 2025 from 10:00-14:30**. You'll have the chance to try out two of their many wonderful courses as well as one of the Sports Academies! You'll also have the opportunity to speak to staff about all of the other courses you might be interested in and to get a snapshot of what college life is like.

[Sign up here](#)

# Saturday 17 May 2025

11am-4pm | Memorial Gardens, Crawley

## Drop in and discover a FREE Family STEM Adventure!

Meet STEM experts.  
Get hands-on with local  
businesses and explore  
your future in STEM.



[thestemhub.org.uk  
/stem-in-the-park](https://thestemhub.org.uk/stem-in-the-park)

Test Your Skills: Fly a Drone

Space Talks: Lift-Off Every Hour

Step Aboard the Hydrogen and STEM Buses

Explore Artificial Intelligence, Plant Health, Thermal  
Imaging & More with the University of Sussex

Experience Careers Behind  
the Scenes at London Gatwick

Engaging STEM Displays for all ages

Explore more STEM activities  
at Crawley College



Building on the success of last year's event, which drew an impressive crowd of around 4,000 visitors, STEM in the Park is back! Mark your calendar for Saturday 17 May 2025, when Crawley's Memorial Gardens will once again host this much-loved annual celebration of all things STEM (Science, Technology, Engineering, and Maths).

STEM in the Park is all about sparking curiosity and excitement in young minds, encouraging them to explore the fascinating world of STEM. By showcasing how engaging and rewarding careers in STEM can be, this event aims to plant the seeds of inspiration early, igniting a lifelong passion for discovery and innovation.

Supported by local employers, Higher Education Institutions, colleges, professional bodies, STEM communicators, and educators, this free, family-friendly STEM festival offers an action-packed day filled with interactive activities and exhibits to inspire curiosity and creativity.

The event is supported by Crawley Borough Council and London Gatwick and delivered by The STEM Hub.

### **What Next Sussex?**

**WHAT NEXT SUSSEX!**

**SAVE THE DATE!**

**MAY 22 2025**

**WHAT NEXT SUSSEX is back for 2025!**

Are you a young person choosing what to do after their GCSEs, or a parent/ carer or teacher?

Then join us in a live online event packed full of information and advice so you, or someone you are supporting, can make informed choices.

**The event will have:**

- A chance to chat to colleges, universities, apprenticeship providers, employers and careers advisors across Sussex through Live typed Chat
- Up to date video content about the different pathways available after GCSE, including for young people with SEND
- Info for parents and carers

**Live online Thursday 22 May**  
**2-3pm & 6-7pm**  
(with additional content available after)

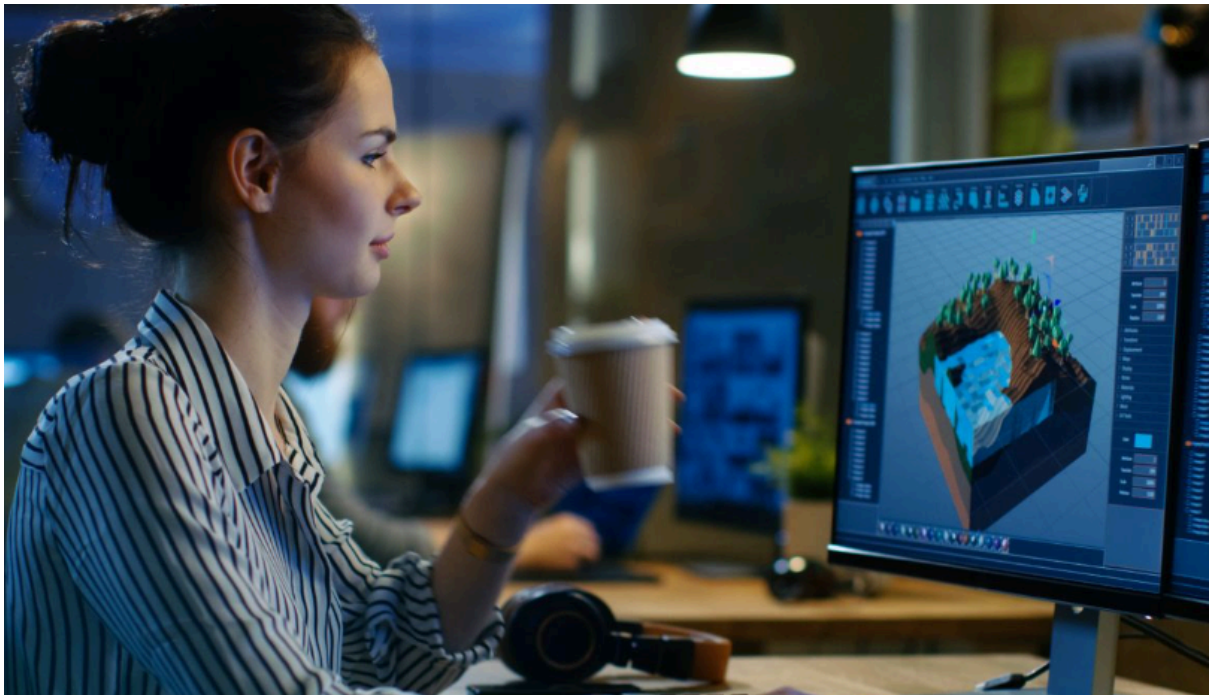
To register your interest in attending, please scan the QR code

Logos at the bottom: Skills East Sussex, West Sussex Brighton and Hove Careers Hub, East Sussex Careers Hub, East Sussex County Council, West Sussex County Council, Brighton & Hove City Council, Sussex Learning Network.

Below is a link to their flipbook which will be of use to both parents/carers and students

[\*\*What Next? - West Sussex, Brighton & Hove | PDF to Flipbook.\*\*](#)

## **Job of the month - Animator**



To become an animator, you will need the necessary design skills and knowledge, plus media production, communication and the ability to use your initiative. Have excellent knowledge of the fine arts and to be able to use a computer and software packages.

Game developers create characters, objects and scenery in games. They paint textures and create wireframes to produce believable models. They draw, model, texture and animate in different styles – either working to brief or creating innovative concepts. They use shading and special effects as well as add textures to digital models.

### **KEY SKILLS**

Are very creative

Have excellent IT skills

Are patient

Are able to work to deadlines

### **Average Salary**

Entry level - £14,000

Experienced - £40,000 plus



## **Labour Market Information (LMI)**

As part of the regular bulletins, we will be including any labour market information we have available to keep you abreast of where new opportunities are likely to arise as well as what is currently available within the labour market.

The Office for National Statistics link below gives national information that gives estimates as well as regional, local authority and Parliamentary constituency breakdowns of changes in the UK of employment, unemployment, economic inactivity and other employment-related statistics for the UK.

Click [here](#) for the national picture.

Click [here](#) for a breakdown of information broken down into regions of the UK.

Click [here](#) for Brighton and Hove local economic information

**For more careers education information, advice and guidance visit the careers page on Blatchington Mill School website by clicking [here](#).**